



08 10 25

WHY WAIT? -

PHOTO



**Cameras
Lenses
Power
Filters
Monitors
Flash
Modifiers**

Via Adelaide Bono Cairoli, 20
20127 Milano
Booking Rental
rental@recdistrikt.com
342 74 92 831
Booking Studio
studio@recdistrikt.com
342 74 92 831
Orari
dal lunedì al venerdì
09:30 - 13:00
14:00 - 18:30



GENERAL RENTAL TERMS AND CONDITIONS

The rental of spaces and tangible assets owned by our company (or in any case materially and legally available to Rec Distrikt SRL) is governed by these General Rental Terms and Conditions, which must be fully accepted, without any reservation, at the time of confirmation of the quotation by email, or by signing the quotation prior to the scheduled date for collection of the equipment, even where collection is carried out by third parties, or in the case of use of the premises.

Art. 1 - The equipment and instruments rented are in perfect working condition, tested and ready for their intended use, and must be returned in the same condition at the end of the rental period.

By signing these General Terms and Conditions and the delivery note (DDT), the Contractor expressly acknowledges the perfect state of use, maintenance and operation of the equipment and instruments, as well as their completeness with all accessories necessary for operation.

The equipment and instruments shall be delivered to the Contractor at the premises of Rec Distrikt SRL or at the delivery address agreed in writing.

Should the equipment be collected by a person other than the Contractor or an employee of the Contractor, this must be communicated in writing at the time of the rental request, and the delegate must be provided with written authorization, including the power to sign the delivery note, with the Contractor assuming full responsibility in this regard.

Art. 2 - The equipment rented by Rec Distrikt SRL is prepared in accordance with applicable regulations. The Client, who will carry out installation and connections, also through third parties, must strictly comply with all safety regulations, assuming full criminal, civil and fiscal liability, and expressly indemnifying and holding harmless Rec Distrikt SRL from any damage caused to third parties or to the Contractor itself arising from the use of the rented equipment and instruments.

Art. 3 - The Client is required to communicate any changes. Rentals cancelled within 24 hours prior to the scheduled collection date shall still be invoiced, and the Contractor shall be required to pay the full agreed rental price.

In the case of a Monday collection, Friday shall always be considered the last available day for cancellation.

Art. 4 - The price list may be subject to change without prior notice. Rec Distrikt SRL shall apply in its invoices the prices indicated in the price list in force on the day of collection.

Art. 5 - The rented equipment may also be used abroad, in which case the lessee undertakes to request written authorization from Rec Distrikt SRL and the preparation of the relevant documentation.

Art. 6 - The rental ends on the date indicated in the confirmation, at which time the equipment and instruments must be returned in perfect condition to the premises of Rec Distrikt SRL.

Return must take place strictly by 8:00 p.m. on the last rental day or by 10:00 a.m. on the day following the last rental day. Any different agreement must be made in writing.

Following return, Rec Distrikt SRL shall inspect the equipment and reserves the right to raise observations and objections within five (5) days from the actual return.

In approval, pursuant to and for the purposes of Articles 1341 et seq. of the Italian Civil Code, the Contractor expressly declares acceptance of the following clauses (Art. 1, Art. 2, Art. 3, Art. 4, Art. 6, Art. 8, Art. 9, Art. 10 and Art. 11), also initialing each page to confirm review and specific approval of each clause and condition.

Rec Distrikt SRL The Contractor

In the event of failure to return the equipment within the agreed term, the Contractor shall be required to pay the rental fee also for the day scheduled for return and, in any case, until actual return, with the consequence that any delay in returning the equipment shall be considered an extension of the rental period, without prejudice to compensation for any greater damage suffered.

Art. 7 - Unless otherwise agreed, the rental period is calculated in days, based on the arithmetic difference between the return date and the collection date. The equipment may be collected on the afternoon of the previous day, from 4:00 p.m.

The minimum rental period is one (1) day.

Art. 8 - In the event of missing, damaged, spoiled or improperly used equipment (including, by way of example only, blown lamps or laundry costs for fabrics), such items shall be charged to the Client at market price.

Partial returns of components belonging to the same piece of equipment are not accepted.

Rental days shall be calculated until the full and complete return of all rented equipment and instruments.

Art. 9 - The Contractor acknowledges that the equipment and instruments rented from Rec Distrikt SRL are not insured against theft or damage of any kind.

Therefore, the Contractor shall be directly and fully responsible in the event of theft, fire or loss of the equipment, having assumed custody of the assets at the time of collection, including in cases of collection via courier and/or delegate.

In all cases, the Contractor must inform Rec Distrikt SRL of any damage and/or event concerning the rented equipment.

Art. 10 - Rec Distrikt SRL shall not be held liable for any damage suffered by the Contractor or third parties arising from or connected with the use of the rented equipment and instruments, including, without limitation, direct damages or loss of profits due to malfunction or failure of the equipment, whose condition was in any case compliant at the time of delivery.

Any objections regarding the condition of the equipment must be raised at the time of collection, failing which any claim shall be forfeited.

Art. 11 - Any dispute relating to the interpretation and/or execution of this contract shall be subject to the exclusive jurisdiction of the Court of Milan, to the exclusion of any other court.

FUJIFILM GFX 100 II

1

ITEM DESCRIPTION



IN THE BOX

- 1x Camera body
- 3x Fuji NP-W235 batteries
- 1x Battery charger
- 2x Angelbird SD cards 128Gb / 300mb/s
- 1x Reader with USBC cable
- 1x Fujifilm neck strap
- 1x Cable holder

PRICE 289€

EXTRA

Battery Grip - 29€

NOTES

Sensor dimensions	MF 43.8 x 32.9 mm
Sensor type	CMOS II HS
Megapixels	102
Mount	G
Min / Max frame rates	8 - 120 fps
Weight	0.87 kg /1.9 lbs
Rec codecs	MOV, MP4, 4K/DCI4K / JPEG, RAW
Media support	SD, SSD, SDHC, SDXC



Sensor size

CANON EOS R5 II

ITEM DESCRIPTION



IN THE BOX

- 1x Camera body
- 3x Canon LP-E6P Batteries
- 1x Battery charger
- 2x Sandisk SD cards 128Gb / 300mb/s
- 1x Reader with type C cable

PRICE € 179

NOTES

Sensor dimensions	FF 36 x 24 mm
Sensor type	Dual-Pixel CMOS
Megapixels	45
Mount	RF
Weight	0,7 kg /1.5 lbs
Rec codecs	MP4, XF-AVC / JPEG, RAW
Rec codecs (Video)	RAW (8K) / MP4 / HD
Media support	CFExpress B, SD



Sensor size

CANON R5

3

ITEM DESCRIPTION



IN THE BOX

1x Camera body
 3x Canon EP-N6 Batteries
 1x Battery charger
 2x CFExpress cards type B (125Gb & 256Gb)
 1x Reader with type C cable
 1x Cage
 1x Top handle
 2x 15mm rods 20cm in length
 1x HDMI cable
 1x HDMI - micro HDMI cable

PRICE 159€

EXTRA

Battery Grip BG-R20 - **29€**

NOTES

Sensor dimensions	FF 36 x 24 mm
Sensor type	Dual-Pixel CMOS
Megapixels	45
Mount	RF
Min / Max frame rates	24 - 120 fps
Weight	0,7 kg /1.5 lbs
Rec codecs	MP4, XF-AVC / JPEG, RAW
Media support	CFExpress B, SD



Sensor size

CANON 5D MARK IV

ITEM DESCRIPTION



IN THE BOX

- 1x Camera body
- 3x Canon EP-N6 Batteries
- 1x Battery charger
- 2x Sandisk SD cards 128Gb / 300mb/s
- 1x Reader with type C cable
- 1x Neck Strap

PRICE 139€

EXTRA

Battery Grip - 29€

NOTES

Sensor dimensions	FF 36 x 24 mm
Sensor type	Dual-Pixel CMOS
Megapixels	30.4
Mount	EF
Min / Max frame rates	30 fps
Weight	0,8 kg /1.7 lbs
Rec codecs	MP4, MOV / JPEG, RAW 4K
Media support	SD



Sensor size

NIKON D850

ITEM DESCRIPTION



IN THE BOX

1x Camera body
3x Canon EP-N6 Batteries
1x Battery charger
2x Sandisk SD cards 128Gb / 300mb/s
1x Reader with type C cable
1x Neck Strap

PRICE 139€

EXTRA

Battery Grip - 29€

NOTES

Sensor dimensions	FF 36 x 24 mm
Sensor type	Dual-Pixel CMOS
Megapixels	30.4
Mount	EF
Min / Max frame rates	30 fps
Weight	0,8 kg /1.7 lbs
Rec codecs	MP4, MOV / JPEG, RAW 4K
Media support	SD



Sensor size

SONY ALPHA 7R V

ITEM DESCRIPTION



IN THE BOX

- 1x Camera body
- 3x Sony NP-FZ100 batteries
- 1x Battery charger
- 2x CFExpress cards type A 160gb
- 1x Reader with USBC cable
- 1x Sony neck strap

PRICE 159€

NOTES

Sensor dimensions	FF 36 x 24 mm
Sensor type	BSI - CMOS
Megapixels	60
Mount	E
Min / Max frame rates	Up to 120 fps
Weight	0,71 kg / 1.6 lbs
Rec codecs	HAVC intra, XAVC long
Media support	CF express Tipo A



Sensor size

FUJIFILM Fujinon GF / R WR

ITEM DESCRIPTION



NOTES

PRICE € 69/ea. *(except for the 120mm, which costs € 79)

FOCAL	20-35MM	32-64mm	45-100mm	55MM	63mm	80MM	120mm
APERTURE	T 4	T4	T4	T 1.7	T 2.8	T1.7	T4
DIAMETER	82Ø	77Ø	82Ø	77Ø	62Ø	77Ø	72Ø
WEIGHT	0.73kg / 1.6lb	0.88kg / 1.9lb	1kg / 2.2lb	0.78kg / 1.7lb	0.4kg / 0.9lb	0.8kg / 1.8lb	0.98kg / 2.2lb
CF	0.35m / 1'2"	0.6m / 1'11"	0.65m / 2'1"	0.5m / 1'6"	0.5m / 1'6"	0.7m / 2'4"	0.45m / 1'5"
COVERAGE	MF	MF	MF	MF	MF	MF	MF
MOUNT	G	G	G	G	G	G	G

1

CANON_{RF}

ITEM DESCRIPTION



NOTES

PRICE € 69/ea.

FOCAL	35MM	50MM	85MM	100MM MACRO
APERTURE	T 1.4	T 1.2	T 1.2	T 2.8
DIAMETER (internal)	67Ø	77Ø	82Ø	82Ø
WEIGHT	0.55 kg / 1.2 lb	0.95 kg / 2.1 lb	1.2 kg / 2.6 lb	1.12 kg / 2.46 lb
CLOSE FOCUS	0.28m / 11"	0.40m / 1'4"	0.85m / 2'9"	0.68m / 2'3"
COVERAGE	FF	FF	FF	FF
MOUNT	RF	RF	RF	RF

1

CANON RF Zooms

ITEM DESCRIPTION



NOTES

PRICE € 69/ea.

FOCAL	15-35MM	24-70MM	28-70MM	70-200MM	24-105mm
APERTURE	T2.8	T 2.8	T 2.8	T 2.8	T 2.8
DIAMETER (internal)	82Ø	82Ø	95Ø	95Ø	82Ø
WEIGHT	0.84 kg / 1.85 lb	0.9 kg / 1.89 lb	1.43 kg / 3.15 lb	1.12 kg / 2.46 lb	1.12 kg / 2.46 lb
CLOSE FOCUS	0.28m / 11"	0.38m / 1'3"	0.39m / 1'3"	0.68m / 2'3"	0.68m / 2'3"
COVERAGE	FF	FF	FF	FF	FF
MOUNT	RF	RF	RF	RF	RF

1

CANON_{EF}

ITEM DESCRIPTION



NOTES

PRICE € 69/ea.

FOCAL	50MM	85MM	100MM MACRO
APERTURE	T 1.2	T1.4	T 2.8
DIAMETER (internal)	72Ø	Ø77	67Ø
WEIGHT	0.6 kg / 1.3 lb	1 kg / 2.2 lb	0.63 kg / 1.4 lb
CLOSE FOCUS	0.45m / 1'5"	0.85m / 2'9"	0.3m / 11.8"
COVERAGE	FF	FF	FF
MOUNT	EF	EF	EF

CANON EF Zooms

ITEM DESCRIPTION



NOTES

PRICE € 69/ea.

FOCAL	16-35MM	24-70MM	70-200MM	100MM MACRO	50MM
APERTURE	T 2.8	T 2.8	T 2.8	T 2.8	T1.2
DIAMETER (internal)	82Ø	82Ø	77Ø	67Ø	72Ø
WEIGHT	0.72 kg / 1.6 lb	0.8 kg / 1.7 lb	1.49 kg / 3.28 lb	0.63 kg / 1.4 lb	0.6 kg / 1.3 lb
CLOSE FOCUS	0.28m / 11"	0.38m / 1'25"	1.2m / 3'9"	0.3m / 11.8"	0.45m / 1'5"
COVERAGE	FF	FF	FF	FF	FF
MOUNT	EF	EF	EF	EF	EF

1

NIKON_{lens}

ITEM DESCRIPTION



NOTES

PRICE € 69/ea.

FOCAL	24-70MM	50MM	85MM	105MM
APERTURE	T 2.8	T 1.4	T 1.4	T 2.8
DIAMETER (internal)	82Ø	58Ø	58Ø	62Ø
WEIGHT	0.84 kg / 1.85 lb	0.25 kg / 0,55 lb	0.3 kg / 0.7 lb	0.7 kg / 1.6 lb
CLOSE FOCUS	0.28m / 10"	0.45m / 17,7"	0.25m / 10"	0.31m / 1'
COVERAGE	FX	FX	FX	FX
MOUNT	F	F	F	F

SONY LENSES ZOOM G II

ITEM DESCRIPTION



NOTES

PRICE 69€ / ea.

FOCAL	12-24MM	16-35MM	24-70MM	70-200MM
APERTURE	T 2.8	T 2.8	T 2.8	T 2.8
COVERAGE	FF	FF	FF	FF
WEIGHT	0.85 kg / 1.87 lb	0.68 kg / 1.5 lb	0.89 kg / 1.9 lb	1.48 kg / 3.3 lb
CLOSE FOCUS	0.11m / 4.3"	0.28m / 11"	0.31m / 12"	0.96m / 3'2"
DIAMETER (internal)		82Ø	82Ø	77Ø
MOUNT	E	E	E	E

SONY LENSES ZOOM

ITEM DESCRIPTION



NOTES

PRICE 79€ / 119€

FOCAL	28-70MM	50-150MM	200-600MM
APERTURE	T 2	T 2	T 5.6-6.3
DIAMETER (internal)	86Ø	95Ø	95Ø
WEIGHT	0.9 kg / 2 lb	1.34 kg / 2.95 lb	2.1 kg / 4.7 lb
CLOSE FOCUS	0.38m / 1'3"	0.74m / 2'4"	2.4m / 7'8.6"
COVERAGE	FF	FF	FF
MOUNT	E	E	E

SONY G-MASTER

1

ITEM DESCRIPTION



NOTES

PRICE € 59/ea.

FOCAL	14MM	24MM	35MM	50MM	85MM
APERTURE	T 1.8	T 1.4	T 1.4	T 1.2	T 1.4
DIAMETER (internal)		67Ø	67Ø	72Ø	77Ø
WEIGHT	0.46 kg / 1 lb	0.46 kg / 1 lb	0.52 kg / 1.1 lb	0.76 kg / 1.7 lb	0.64 kg / 1.4 lb
CLOSE FOCUS	0.25m / 0.82 ft	0.24m / 0.79ft	0.27m / 0.89ft	0.40m / 1.3ft	0.85m / 2.79ft
COVERAGE	FF	FF	FF	FF	FF
MOUNT	E	E	E	E	E

CIRCULAR FILTERS

1

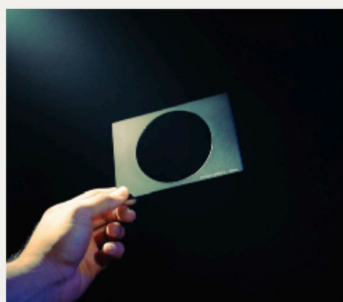
ITEM DESCRIPTION



BRAND	DESCRIPTION	PRICE
TIFFEN	Black Pro Mist Circular $\frac{1}{8}$ - $\frac{1}{4}$ - $\frac{1}{2}$ 82mm	€ 19/ea
K&F	White Diffusion Circular 82mm	€ 19
WalkingWay	White Mist Diffusion Circular 82mm	€ 19
H&Y	Black Pro Mist Circular $\frac{1}{8}$ - $\frac{1}{4}$ 67 - 82mm	€ 39 (set of 2)
TIFFEN	Soft FX $\frac{1}{2}$ 82mm	€ 19
TIFFEN	Glimmer Glass $\frac{1}{8}$ - $\frac{1}{4}$ - $\frac{1}{2}$ - 1 82mm	€ 19/ea
TIFFEN	Pearllescent $\frac{1}{8}$ 82mm	€ 19
TIFFEN	Pro Mist $\frac{1}{8}$ - $\frac{1}{4}$ - $\frac{1}{2}$ - 1 82mm	€ 19/ea
TIFFEN	Warm Pro Mist $\frac{1}{8}$ - $\frac{1}{4}$ - $\frac{1}{2}$ - 1 82mm	€ 19/ea
Schneider	Hollywood Black Magic $\frac{1}{2}$ - $\frac{1}{4}$ - 1 82mm	€ 19/ea
NiSi	ND Variable Circular 1 - 5 stops 77mm / 82mm / 95mm	€ 19/ea
NiSi	ND Variable Circular 9-5 stops 77mm / 82mm	€ 19/ea
K & F	ND Variable Circular 1 - 9 stops 82mm	€ 19
URTH	ND Variable Circular 1 - 8.6 stops 95mm	€ 19
Hoya	Circular Polarizer 82mm	€ 29
URTH	UV 67mm / 77mm / 82mm	€ 9/ea

PRISM LENS FX

ITEM DESCRIPTION



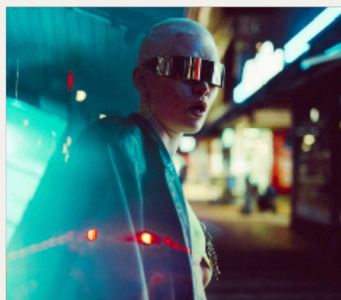
Split Diopter | 82mm

€ 19



Handheld Subtle Kaleidoscope | Ø150mm

€ 19



Mountable Triangular Prism

€ 19



Kaleidoscope FX Filter | 82mm

€ 19

PRISM LENS FX

ITEM DESCRIPTION



Centerfield Split Diopter | 82mm

€ 19



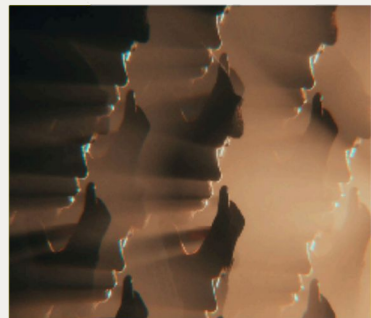
Subtle Linear FX | 82mm

€ 19



Linear Prism | 90mm

€ 19



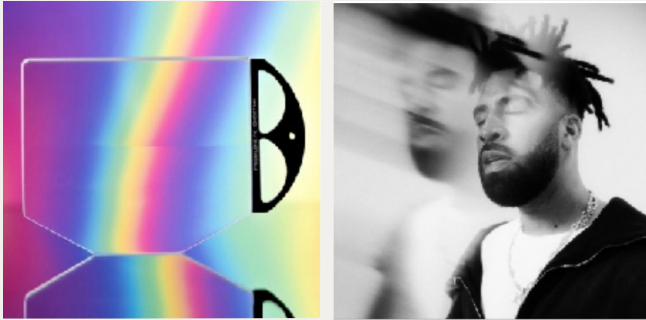
Subtle Kaleidoscope | 90mm

€ 19

PRISM LENS FX

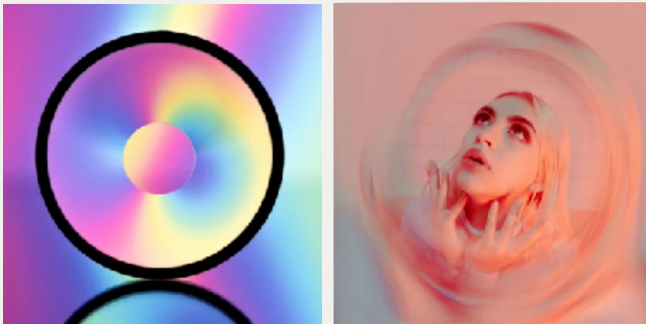
1

ITEM DESCRIPTION



Handheld Ghost FX | \varnothing 150mm or \varnothing 100mm

€ 19



Halo FX | 77mm

€ 19

APPLE

ITEM DESCRIPTION



BRAND	DESCRIPTION	PRICE
APPLE	Apple iPad PRO 12.9" - 256 gb	€ 89
APPLE	iPhone 17 Pro Max - 1TB	€ 79
APPLE	MacBook Pro M1 32gb RAM / 16" - 1TB	€ 99
APPLE	MacBook Pro M4 MAX 36gb RAM / 16" - 1TB	€ 119

ACCESSORIES

DJI	Ronin Support for iPad	€ 9
SMALLRIG	iPhone Cage + Handles	€ 29
DJI Osmo Mobile 7P	Gimbal for Smartphones	€ 69
Khronos	Accessory Kit: 58mm Filter, LED, Focus PD Handle, Cooling system	€ 49

TRIPODS ACCESSORIES

ITEM DESCRIPTION



TRIPODS	DESCRIPTION	PRICE
MANFROTTO	058B	€ 59
GITZO	Systematic series 5XL // 4 Sections	€ 49
GITZO	Mountaineer series 2 // 4 Sections	€ 39

HEADS	DESCRIPTION	PRICE
MANFROTTO	405	€ 69
GITZO	Gitzo 3-way fluid head	€ 49

ARMS	DESCRIPTION	PRICE
MANFROTTO	131DB	€ 29
GITZO	G535	€ 49

1

PROFOTO PRO 11

ITEM DESCRIPTION



NOTES

PRICE

€ 129

LIGHT OUTPUT	2400 Ws
POWER RANGE	11 f-stop
FLASH DURATION	MAX 1/80 000 s
RECYCLE TIME	0,02 - 0,7 s
SYINC MODES	Normal Sync / HSS
WIRELESS SYSTEM	AirX
POWER SUPPLY	100-127 V / 200-240 V, 50/60 Hz.
WEIGHT	13,2 kg

1

PROFOTO PRO 11// ACCESSORY

ITEM DESCRIPTION



PRO HEAD

€ 79



PRO RING

€ 79

PROFOTO D - SERIES

ITEM DESCRIPTION



D2 € 129

LIGHT OUTPUT	1000 Ws
POWER RANGE	10 f-stop
FLASH DURATION	1/50 000 s
RECYCLE TIME	0,03 - 1,2 s
SYINC MODES	Normal Sync / HSS
WIRELESS SYSTEM	NO AirX
POWER SUPPLY	100 V - 240 V, 50/60 Hz.
WEIGHT	3,4 kg

D3 € 199

LIGHT OUTPUT	750 Ws
POWER RANGE	11 f-stop
FLASH DURATION	1/75,000 s
RECYCLE TIME	0,01 - 0,5 s
SYINC MODES	Normal Sync / HSS / TTL
WIRELESS SYSTEM	AirX
POWER SUPPLY	100-127 V / 200-240 V, 50/60 Hz.
WEIGHT	3,6 kg

PROFOTO B - SERIES

ITEM DESCRIPTION



B10X € 99

LIGHT OUTPUT	250 Ws
POWER RANGE	10 f-stop
FLASH DURATION	1/42,000 s
RECYCLE TIME	0.05 - 1.3 s
SYINC MODES	TTL/ HSS
WIRELESS SYSTEM	AirX
POWER SUPPLY	Battery 400 full-power flashes
WEIGHT	1,5 kg

B30 € 129

LIGHT OUTPUT	500 Ws
POWER RANGE	11 f-stop
FLASH DURATION	1/9800 s
RECYCLE TIME	0,01 - 2,1 s
SYINC MODES	TTL/ HSS
WIRELESS SYSTEM	AirX
POWER SUPPLY	Battery 250 full-power flashes
WEIGHT	2,2 kg

B3 € 149

LIGHT OUTPUT	750 Ws
POWER RANGE	11 f-stop
FLASH DURATION	1/75 000 s
RECYCLE TIME	0,02 - 2,3 s
SYINC MODES	TTL/ HSS
WIRELESS SYSTEM	AirX
POWER SUPPLY	Battery 250 full-power flashes
WEIGHT	2,8 kg

PROFOTO A2

ITEM DESCRIPTION



NOTES

PRICE **A2 €99**
BATT. €9

LIGHT OUTPUT	100 Ws
POWER RANGE	0.1 - 100 Ws (10 stop)
FLASH DURATION	†0.1: 1/350 s - 1/26.000 s
RECYCLE TIME	0.1 - 1.6 s
COLOR TEMPERATURE	5800 K ±100 K
COLOR STABILITY	≈ ±0.1-0.2 f-stop
MODELING LIGHT	LED
SYNCH MODES	HSS, TTL/Manual, wireless sync
WIRELESS SYSTEM	Profoto Air/AirTTL (20 canali, 6 gruppi)
POWER SUPPLY	Li-ion
BATTERY CAPACITY	400 flash per carica
WEIGHT	773g

PROFOTO A10

ITEM DESCRIPTION



NOTES

PRICE **A10 €99**
BATT. **€9**

LIGHT OUTPUT	76 Ws
POWER RANGE	1/1-1/256
FLASH DURATION	1/800-1/200000
RECYCLE TIME	0,005-1,0secondi
COLOR TEMPERATURE	150 °K
COLOR STABILITY	150 °K
MODELING LIGHT	LED
SYINC MODES	HSS, TTL/Manual, wireless sync
WIRELESS SYSTEM	Profoto Air/AirTTL (20canali, 6 gruppi)
POWER SUPPLY	Li-ion
BATTERY CAPACITY	450 flash per carica
WEIGHT	560g

PROFOTO D - SERIES

ITEM DESCRIPTION



Connect proTTL / NoTTL € 29

FOCAL	16-35MM
APERTURE	T 2.8
DIAMETER (internal)	95Ø
WEIGHT	0.84 kg / 1.85 lb
CLOSE FOCUS	0.28m / 9'2"
COVERAGE	FF
MOUNT	RF



AIR Remote € 29

FOCAL	16-35MM
APERTURE	T 2.8
DIAMETER (internal)	95Ø
WEIGHT	0.84 kg / 1.85 lb
CLOSE FOCUS	0.28m / 9'2"
COVERAGE	FF
MOUNT	RF

PROFOTO SOFTBOX OCTA

ITEM DESCRIPTION

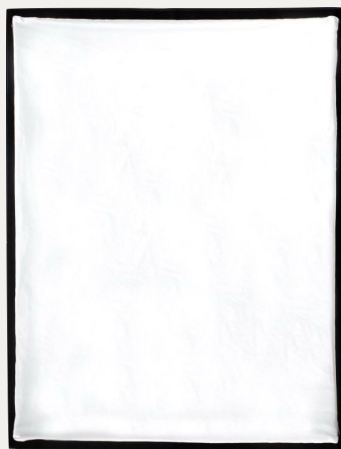


NOTES

NAME	RFi 3'	RFi4'	RFi5'
FRONT DIAMETER	90 cm (36")	129 cm (4,2?)	150 cm (5')
DEEP	40 cm (15,07")	40 cm (15,7")	47 cm (18,5")
PRICE	€39	€49	€59
PRICE GRID	€29	€39	€49

PROFOTO SOFTBOX

ITEM DESCRIPTION



NOTES

NAME	RFi 1X1,3'	RFi1,3X2'	RFi3X4'
FRONT DIAMETER	30x40	40x60	90x120
DEEP	28,5 cm (11,2")	34 cm (13,3")	52 cm (20,4")
PRICE	€29	€39	€49
PRICE GRID	€19	€29	€39

PROFOTO SOFTBOX

ITEM DESCRIPTION



NOTES

NAME	RFi 1X3'	RFi1,1X4'	RFi1X6'
FRONT DIAMETER	30x90	30x120	30x180
DEEP	40,5 cm (16")	43 cm (17")	56 cm (22")
PRICE	€39	€49	€59
PRICE GRID	€29	€39	€49

CHIMERA BANK

ITEM DESCRIPTION



NOTES

NAME	Bank XS	Bank S	Bank M	Bank L
FRONT DIAMETER		60x80	90x120	135x180
DEEP		33 cm (13")	41 cm (16")	75 cm (29,5")
PRICE		€39	€49	€59
PRICE GRID		€29	€39	€49

1

PROFOTO UMBRELLA DEEP SILVER

ITEM DESCRIPTION



NOTES

NAME	S	M	L	XL
FRONT DIAMETER	85 cm (33")	105 cm (41")	130 cm (51")	165 cm (65")
DEEP	33 cm (13")	38 cm (15")	47 cm (19")	58 cm (23")
PRICE	€9	€9	€19	€19

1

PROFOTO UMBRELLA DEEP WHITE

ITEM DESCRIPTION



NOTES

NAME	S	M	L	XL
FRONT DIAMETER	85 cm (33")	105 cm (41")	130 cm (51")	165 cm (65")
DEEP	33 cm (13")	38 cm (15")	47 cm (19")	58 cm (23")
PRICE	€9	€9	€19	€19

1

PROFOTO UMBRELLA DIFFUSER

ITEM DESCRIPTION



NOTES

NAME	S	M	L	XL
FRONT DIAMETER	85 cm (33")	105 cm (41")	130 cm (51")	165 cm (65")
PRICE	€9	€9	€19	€19

1

PROFOTO UMBRELLA DEEP TRANSLUCENT

ITEM DESCRIPTION



NOTES

NAME	S	M	L	XL
FRONT DIAMETER	85 cm (33")	105 cm (41")	130 cm (51")	165 cm (65")
DEEP	33 cm (13")	38 cm (15")	47 cm (19")	58 cm (23")
PRICE	€9	€9	€19	€19

1

PROFOTO U. SHALLOW TRANSLUCENT

ITEM DESCRIPTION



NOTES

NAME	S	M
FRONT DIAMETER	85 cm (33")	105 cm (41")
DEEP	20 cm (8")	28 cm (11")
PRICE	€9	€9

1

PROFOTO UMBRELLA BACKPANEL

ITEM DESCRIPTION



NOTES

NAME	S	M	L	XL
FRONT DIAMETER	85 cm (33")	105 cm (41")	130 cm (51")	165 cm (65")
PRICE	€9	€9	€19	€19

PHOTEK UMBRELLA SOFTLIGHTER

ITEM DESCRIPTION



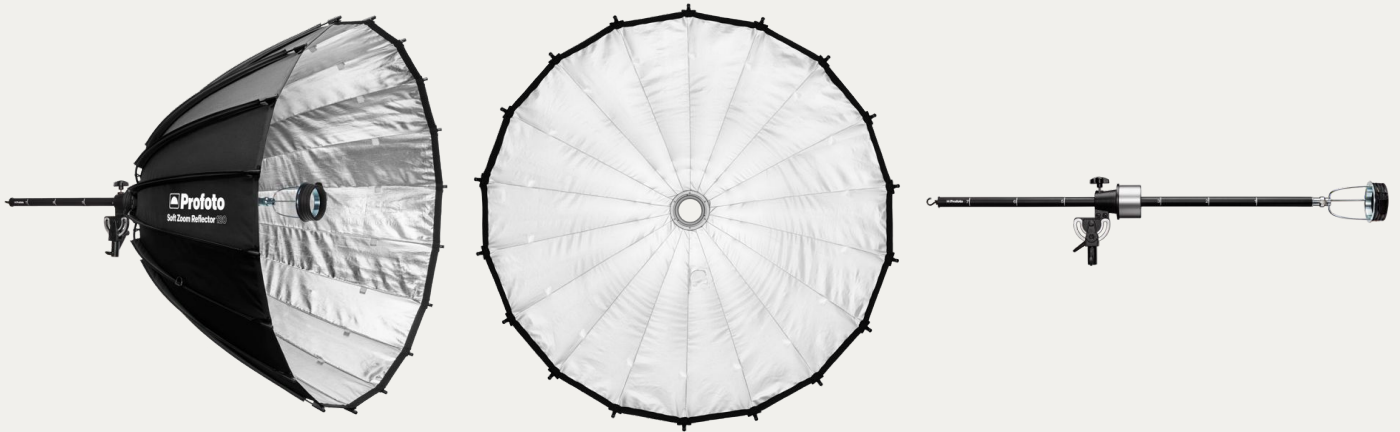
NOTES

NAME	S	M	L
FRONT DIAMETER	36"	46"	60"
PRICE	€9	€9	€19

1

PROFOTO SOFT ZOOM REFLECTOR 120

ITEM DESCRIPTION



NOTES

PRICE

€ 79

1

ELINCHROM ROTALUX INDIRECT 150

ITEM DESCRIPTION



NOTES

PRICE

€ 79

1

PROFOTO BEAUTY DISH WHITE/SILVER

ITEM DESCRIPTION

PRICE 39€



PROFOTO SOFTLIGHT REFLECTOR WHITE

ITEM DESCRIPTION

PRICE 39€



PROFOTO HARD REFLECTOR

ITEM DESCRIPTION



NOTES

NAME	ZOOM REFLECTOR	MAGNUM REFLECTOR	OFC MAGNUM REFLECTOR	CLIC MAGNUM
PRICE	€19	€29	€29	€19

1

PROFOTO FRESNEL SMALL

ITEM DESCRIPTION



PRICE 79€

PROFOTO SNOOT

ITEM DESCRIPTION



PRICE SNOOT 19€
GRID FILTER HOLDER 9€

1

PROFOTO SPOT SMALL

ITEM DESCRIPTION



PRICE 79€

PROFOTO HARDBOX

ITEM DESCRIPTION



PRICE 79€

PROFOTO PROBOX

ITEM DESCRIPTION



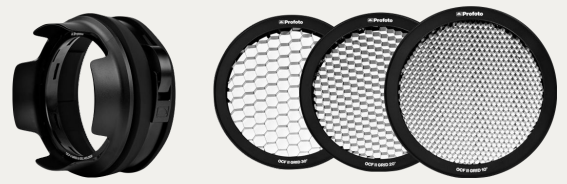
PRICE 79€

PROFOTO GRID

ITEM DESCRIPTION



CLIC GRID **PRICE 19€**



OCF // GRID 10°-20°-30° **PRICE 29€**



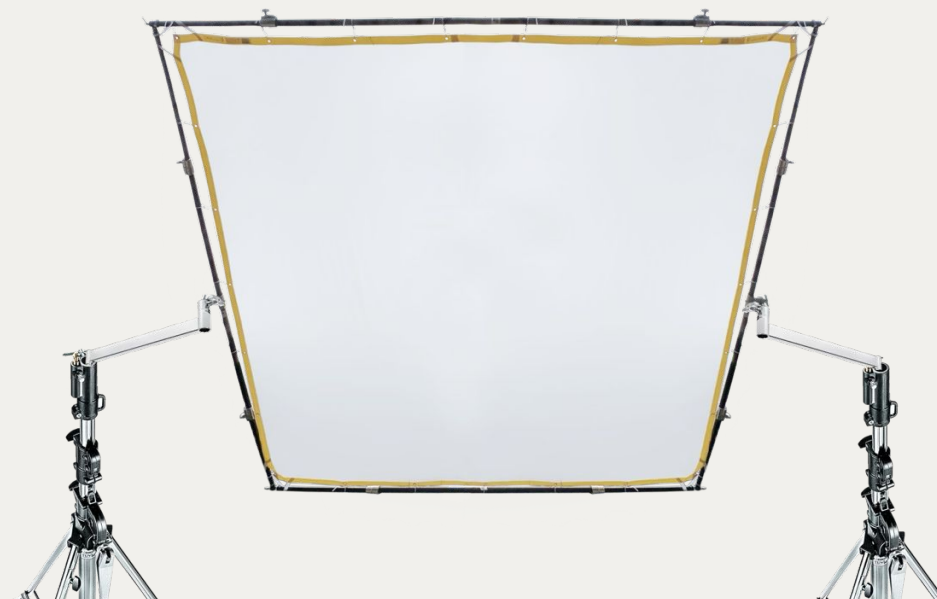
HONEYCOMB GRID 100 5°-10°-20° **PRICE 39€**



HONEYCOMB GRID 180 5°-10°-20° **PRICE 49€**

BUTTERFLY

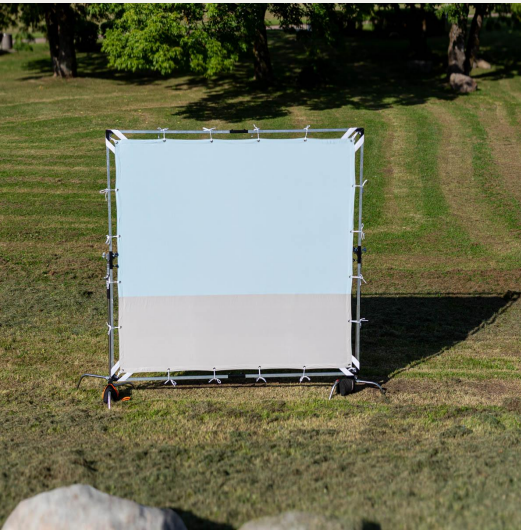
ITEM DESCRIPTION



SIZE	NAME	PRICE
6"x6" / 2x2 m	Modular Butterfly Frame	€ 39
12"x12" / 4x4 m	Modular Butterfly Frame	€ 49
20"x20" / 6x6 m	Modular Butterfly Frame	€ 89
6" / 2 m	Butterfly Male / T-Bone (Cristo)	€ 39
12" / 4 m	Butterfly Male / T-Bone (Cristo)	€ 39
20" / 6 m	Butterfly Male / T-Bone (Cristo)	€ 39

CLOTHS

ITEM DESCRIPTION



SIZE

6"x6" / 12"x12" / 20"x20"

12"x12"

6"x6" / 12"x12" / 20"x20"

6"x6" / 12"x12" / 20"x20"

6"x6" / 12"x12" / 20"x20"

6"x6" / 12"x12"

6"x6" / 12"x12"

6"x6" / 12"x12"

6"x6"

6"x6" / 12"x12" / 20"x20"

6"x6" / 12"x12"

NAME

Black solid

White Solid

Grid Cloth Full - 1/2 - 1/4

Silk Full - 1/2 - 1/4

Bemberg

Bleached

Unbleached

Green/Blu

Duo Muslin

Checkerboard S/G

HiLite

PRICE

€ 39 - € 49 - € 89

€ 49

€ 39 - € 49 - € 89

€ 39 - € 49 - € 89

€ 39 - € 49 - € 89

€ 39 - € 49

€ 39 - € 49

€ 39 - € 49

€ 39

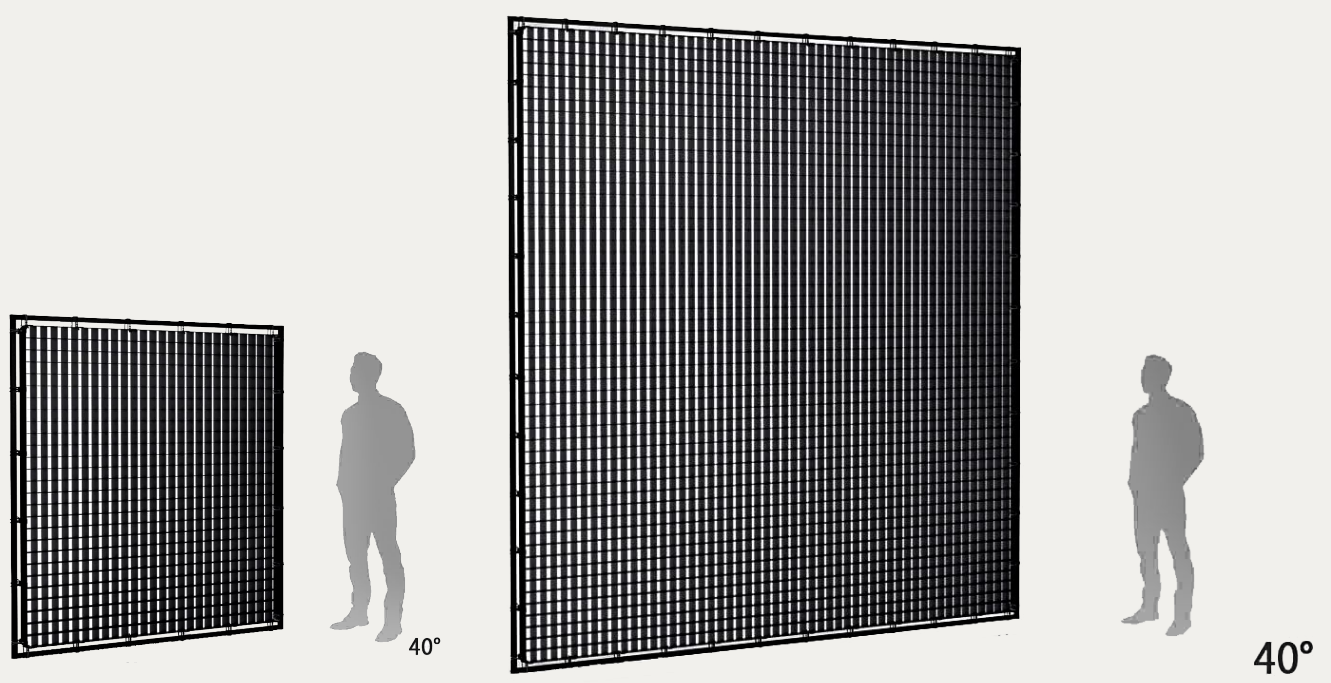
€ 39 - € 49 - € 89

€ 39 - € 49

LIGHT TOOLS EGG CRATE

8

ITEM DESCRIPTION



IN THE BOX	PRICE
EGG CRATE 2X2	€ 149
EGG CRATE 4X4	€ 199

MANFROTTO SKYLITE RAPID

ITEM DESCRIPTION



2X1

2X2

3X3

NOTES

NAME	2X1	2X2	3X3
FRAME	€19	€29	€39
DIFFUSION 0.75	€9	€9	€9
DIFFUSION 1.25	€9	€9	€9
SUNFIRE-WHITE	€9	€9	€9
ULTRABOUNCE	€9	€9	€9
SILVER/WHITE	€9	€9	€9
BLACK SOLID			€19
GREEN/BLUE			€19
SKYLIGHT RAPID	€0	€0	€0

LIGHTING FILTERS

ITEM DESCRIPTION



<i>DIFFUSION</i>	<i>Full - 1/2 - 1/4 - 1/8</i>	<i>5 € / Feet</i>
<i>GRID CLOTH</i>	<i>Full - 1/2 - 1/4 - 1/8</i>	<i>10 € / Feet</i>
<i>CTO</i>	<i>Full - 1/2 - 1/4 - 1/8</i>	<i>5 € / Feet</i>
<i>CTB</i>	<i>Full - 1/2 - 1/4 - 1/8</i>	<i>5 € / Feet</i>
<i>CTS</i>	<i>Full - 1/2 - 1/4 - 1/8</i>	<i>5 € / Feet</i>
<i>PLUS GREEN</i>	<i>Full - 1/2 - 1/4 - 1/8</i>	<i>5 € / Feet</i>
<i>MINUS GREEN</i>	<i>Full - 1/2 - 1/4 - 1/8</i>	<i>5 € / Feet</i>
<i>ND</i>	<i>0.3 - 0.6 - 0.9</i>	<i>5 € / Feet</i>
<i>PRIMARY RED</i>		<i>5 € / Feet</i>
<i>DEEP AMBER</i>		<i>5 € / Feet</i>
<i>AMBER</i>		<i>5 € / Feet</i>
<i>MOONLIGHT BLUE</i>		<i>5 € / Feet</i>
<i>DEEP PURPLE</i>		<i>5 € / Feet</i>
<i>HAMPSHIRE FROST</i>		<i>10 € / Feet</i>
<i>SODIUM</i>		<i>5 € / Feet</i>
<i>CINEFOIL</i>	<i>Rotolo</i>	<i>60 €</i>

PORTABLE POWER STATIONS

ITEM DESCRIPTION



NOTES

NAME	Bluetti	Bluetti	Instagrid	Ecoflow
POWER	286 Wh	2.6Kwh	2.1 Kwh	3.6 Kwh
PRICE	€39	€149	€119	€199